



ENVIRO 4 SPECIFICATIONS

ENVIRO 4
UNIT NUMBER: 99-EN-0004

WATER SEPERATOR FILTER
ELEMENTS PART NUMBER: 47-FMP100308

RETURN FILTER
ELEMENTS PART NUMBER: 47-LE03AZP (2 Micron)
47-LE10P (10 Micron)

Introduction

THE ENVIRO Monitoring and Fuel Conditioning Systems, by JCH Fuel Solutions were designed to keep a pristine state of middle distillate fuel in the main storage tank.

THE ENVIROS not only give you healthy fuel to run your equipment, but a clean storage tank at the same time.

THE ENVIRO 4 systems has been fully automated with SIEMENS PLC Technology and programmed with JCH logic for ease of use and maintenance.

We are monitoring the system for fuel contamination levels. The contamination level will reach a saturation point and alert the user of its maintenance needs on the easy to read 8 color graphic display. The alarms can also be interfaced with central plant monitoring for the customer's convenience. The maintenance can be scheduled and the system can be brought back on line. **THE ENVIRO 4** is a stand-alone closed-loop system with built-in diagnostics. This will meet the environmental issues for a safe operation.

THE ENVIRO Systems were designed for complete fuel remediation and control.

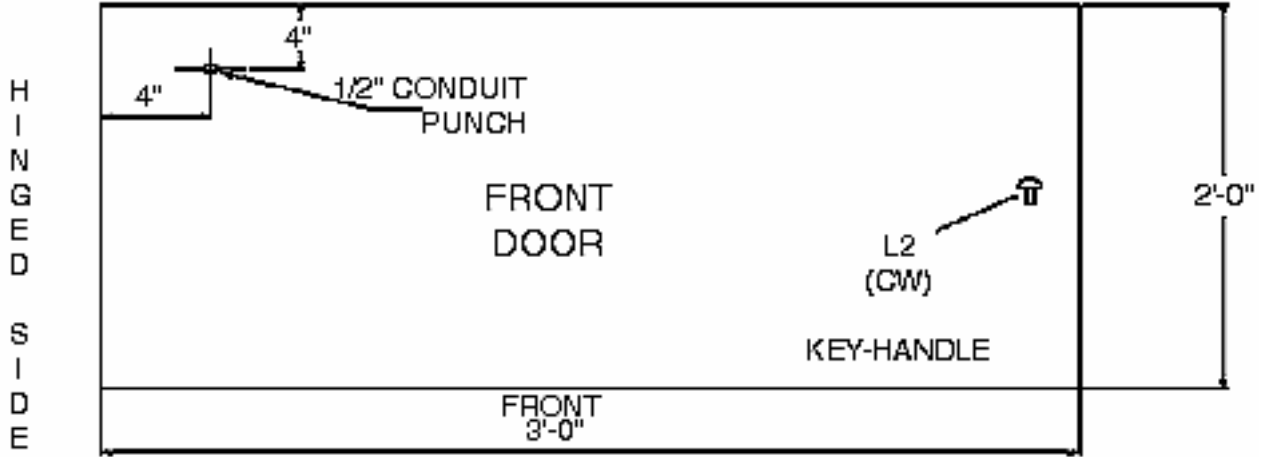
JCH Fuel Solutions is providing excellent fuel quality for today's equipment.

General Specifications

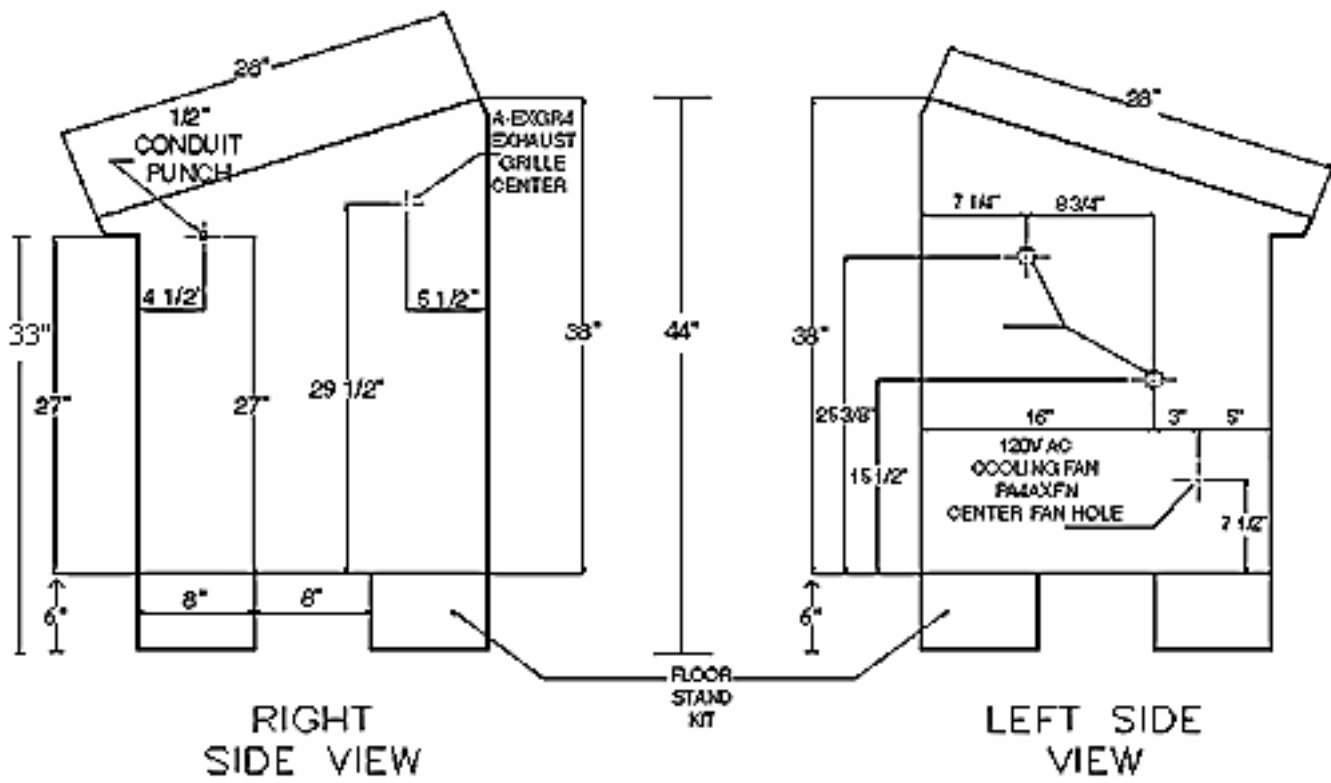
Enviro 4

Floor Mounting	36"W x 38"H x 26"D
	Includes 6" Risers on bottom
Flow Rate	8gpm - 480gph
Electrical.....	120 VAC/6.8A 50/60 Hz
	Single Phase
Motor.....	1/2 HP Single Phase
	120 VAC, 5.6A, 50/60Hz
Inlet	3/4" NPT Male
Outlet	3/4" NPT Male
Maximum Pressure	50 PSIG
System Weight (Empty)	380 lbs.
System Weight (Operational)	400 lbs.

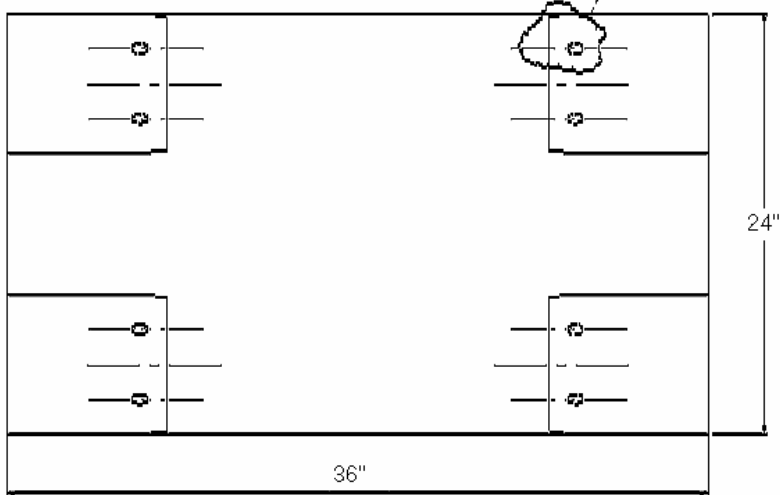
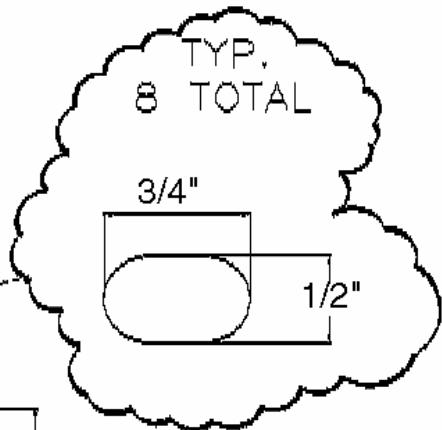
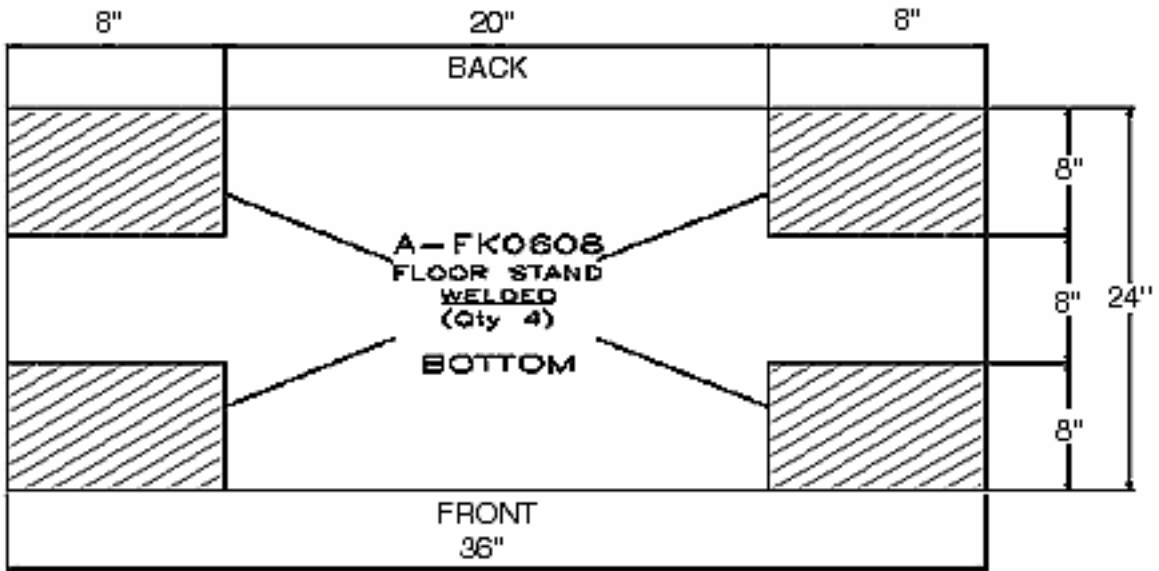
Enviro 4 Main Enclosure



Enviro 4 Main Enclosure

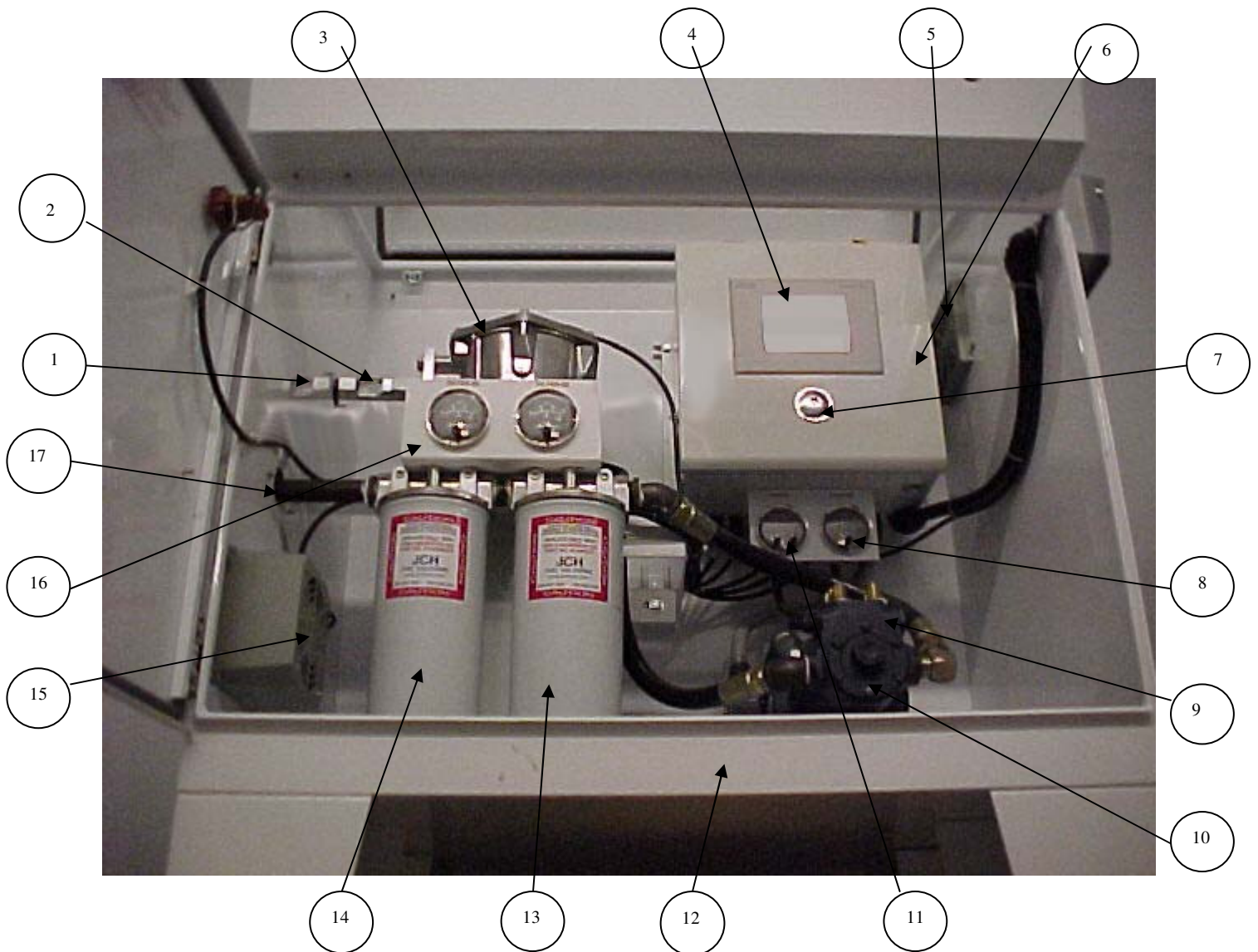


Enviro 4 Main Enclosure



LAYOUT FOR PRE-POURED PAD AND ANCHOR BOLTS

System Internal – Internal Identification



Enviro 4

- | | |
|-------------------------------|---|
| 1) Fuel Inlet | 11) Vacuum Switch Gauge |
| 2) Sight Glass | 12) Containment Area (2 3/4") |
| 3) Separator Strainer 2 | 13) Filter # 2 (10 Micron) |
| 4) Graphic Interface | 14) Filter # 3 (2 Micron) |
| 5) Air Vent | 15) Fan |
| 6) Control Panel | 16) Pressure Differential Switch Gauges (2) |
| 7) Audible Horn | 17) Fuel Outlet |
| 8) High Pressure Switch Gauge | 18) Leak Sensor (Not Shown) |
| 9) Motor (1/2 H.P.) | 19) Drain (Not Shown) |
| 10) Pump Assembly (8 GPM) | |

Installation

1. **MOUNTING: THE ENVIRO** should be wall mounted on a hard, level surface. This unit can be mounted indoors or outdoors, but should not be mounted in non-ventilated locations. The unit should be located as close to the tank as possible.
2. **ELECTRICAL:** Install a disconnect lockout switch within five (5) feet of **THE ENVIRO**. All wiring should meet NEC or local requirements.

POWER REQUIREMENTS:

120 VAC 50/60 Hz
20 AMP Time Delay
or Thermal Breaker

3. **INLET:** A valve should be installed on the inlet to **THE ENVIRO**. Using the proper fuel approved piping, this line should originate from the lowest available point in the tank.
 - ¾" NPT female
 - Valve not included
 - All outlet plumbing should be ¾" or greater
4. **OUTLET:** A valve should be installed on the outlet of **THE ENVIRO**. Fuel approved piping should be plumbed to return fuel to the tank. This line should enter the tank as far away from **THE ENVIRO** suction line as possible.
 - ¾" NPT female
 - Valve not included
 - All outlet plumbing should be ¾" or greater
5. Piping should be rigid type. Dual containment piping should be used for any type of underground lines.

IMPORTANT INSTALLATION PRECAUTIONS

Inlet should be independent of the suction line to the engine. If not possible, a check valve must be installed on the outlet side of **THE ENVIRO**.

The outlet should also be independent of the return line from the engine. If return line from the engine and outlet of **THE ENVIRO** are common, a check valve should be installed on the return from engine. (Many engines are already equipped with a check valve - check with engine manufacturer).

If either of the lines from **THE ENVIRO** is common with the lines from the engine, **THE ENVIRO** should be disabled during generator operation. It is recommended that a relay contactor be installed in series with the incoming electrical in conjunction with the run relay of the generator to supply 120 VAC to the red & white #18 AWG wires that are labeled "customer supply power" located inside the workbox on the outside of the unit. The unit will then not clean during generator operation.

Fuel Cleaning Systems Warranty

LIMITED WARRANTY

JCH Fuel Solutions makes every effort to assure that our products meet high quality and durability standards and we expressly warrant the products described herein which are manufactured by JCH Fuel Solutions against defects in material and workmanship for a period of one (1) year from the date of purchase. This warranty is not intended to supplant normal inspection, care and service of the products covered hereby by the user, and shall not obligate JCH Fuel Solutions to provide free service during the warranty period to correct breakage, maladjustment or other difficulties arising out of abuse, misuse, or improper care and maintenance of such products. Our express warranty is subject to the following terms and conditions:

1. This warranty shall only extend to and is only for the benefit of original purchasers who use the products covered hereby for commercial or industrial purposes.
2. Any warranty claim received by JCH Fuel Solutions after one (1) year from the date of purchase will not be honored even if it is claimed that the defect occurred prior to the one (1) year from the date of purchase.
3. This warranty shall not apply to products (1) which have been tampered with, altered or repaired by anyone other than JCH Fuel Solutions without the express prior written consent of JCH Fuel Solution, (2) which have been installed improperly or subject to misuse, abuse, accident, negligence of others, improper operation or maintenance, neglect or modification, or (3) which have had the serial number altered, defaced or removed.
4. The liability of JCH Fuel Solutions under this warranty is limited to the repair or replacement of the defective product. JCH Fuel Solutions assumes **NO LIABILITY** for labor charges or other costs incurred by any purchaser incidental to the service, adjustment, repair, return, removal or replacement of products. **JCH FUEL SOLUTIONS ASSUMES NO LIABILITY FOR ANY GENERAL, SPECIAL, INCIDENTAL, CONSEQUENTIAL, CONTINGENT OR OTHER DAMAGES UNDER ANY WARRANTY, EXPRESS OR IMPLIED, AND ALL SUCH LIABILITY IS HEREBY EXPRESSLY EXCLUDED.**
5. **JCH FUEL SOLUTIONS MAKES NO WARRANTIES, EXPRESS OR IMPLIED, OF MERCHANTABILITY, FITNESS FOR A PARTICULAR PURPOSE OR OTHERWISE, WITH RESPECT TO THE PRODUCTS COVERED BY THIS WARRANTY POLICY, EXCEPT AS EXPRESSLY PROVIDED FOR HEREIN. NO EMPLOYEE, AGENT, REPRESENTATIVE OR DISTRIBUTOR IS AUTHORIZED TO MAKE ANY WARRANTY ON BEHALF OF JCH FUEL SOLUTIONS, OTHER THAN THE EXPRESS WARRANTY PROVIDED FOR HEREIN.**
6. JCH Fuel Solutions reserves the right at any time to make changes in the design, material, function and specifications of its products. Any such changes shall not obligate JCH Fuel Solutions to make similar changes in such products that were previously manufactured.

WARRANTY CLAIM PROCEDURE

To make a claim under this warranty, please call our Customer Service Representative at **(888) 287-1627**. We will ask you to advise us of our Representative's name and address, the date of purchase, model number and a detailed explanation of the problem you are experiencing. The Customer Service Representative will arrange for a Field Engineer to inspect your system. If the inspection discloses a defect covered by our limited warranty, we will either repair or replace the defective parts or products at our election and at our cost. If upon inspection, our Engineer determines that there is no defect or that the damage to the system resulted from causes not within the scope of our limited warranty, then you must bear the cost of repair or replacement of the damaged parts. For service, please contact **JCH Fuel Solutions**.

JCH Fuel Solutions
4527 Losee Road
N. Las Vegas, NV 89031

Phone: (888) 287-1627 **Fax:** (702) 639-4101 **Direct:** (702) 639-4076

Internet: www.jchfuel.com **E-mail:** fuelsales@jchwire.com